

Raga Amirthavarshini - A Carnatic Melodic Approach

As Sung by Sreyas Narayunun

The below melodies are derived from Raga Amirthavarshini, a pentatonic raga in Carnatic music. The raga includes the following scale degrees: 1 - 3 - #4 - 5 - 7. In the key of C, these pitches would be C - E - F# - G - B. These gestures were sung by Sreyas Narayunun to introduce the character of Raga Amirthavarshini. Phrase markings are provided as a guide to interpret the melodies.

Concert

3

5

7

9

11

13

Measures 15-28 of the musical score for 'The Rose Tree' in G major. The score is written for a single melodic line in treble clef. Measures 15-16 and 17-18 are marked with a '1' in the left margin, indicating first endings. Measures 19-20 and 21-22 are marked with a '2' in the left margin, indicating second endings. The melody features a mix of eighth, sixteenth, and quarter notes, with various rests and accidentals (sharps and naturals). The key signature is one sharp (F#), and the time signature is 4/4. The score concludes with a final measure (28) containing a whole note G.

Melodic Applications:

The following examples take a phrase from Raga Amirthavarshini and modify the phrase to show other types of pentatonic scales. Also experiment with changing the pedal point. In the original example, the tonic is returned to, but other scale degrees, such as the third and fifth, can also be used.

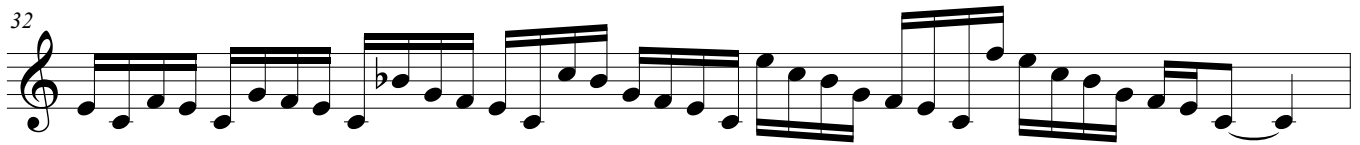
Original phrase with scale degrees 1 - 3 - #4 - 5 - 7



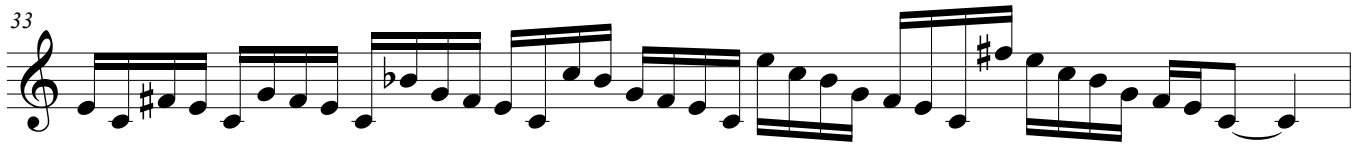
Modified phrase with scale degrees 1 - b3 - 4 - 5 - b7 (minor pentatonic)



Modified phrase with scale degrees 1 - 3 - 4 - 5 - b7 (mixolydian or suspended sound)



Modified phrase with scale degrees 1 - 3 - #4 - 5 - b7 (lydian dominant sound)



Modified pedal point with scale degrees 1 - 3 - #4 - 5 - 7



Modified pedal point with scale degrees 1 - b3 - 4 - 5 - b7

